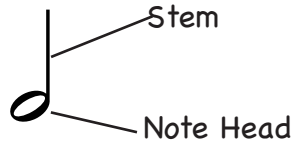


Stems



The direction of a stem can be either facing down or up depending on where the note head sits on the stave.

To figure out which direction the stem would face, think of the space distribution of the note heads and stems making them even on the stave.

Let us look at the notes from the middle line downwards.
(Low notes)



Which part of the stave has more space. The top or the bottom?



The top part of the stave has more space



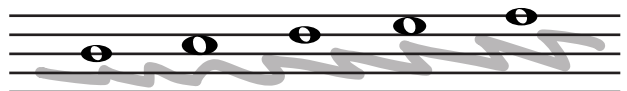
Because of these, the stems will face upwards.
Remember that the stems are drawn on the right side of the note to make the note look like a letter 'd'

Let us look at the notes from the middle line upwards.
(High notes)

Which part of the stave has more space. The top or the bottom?



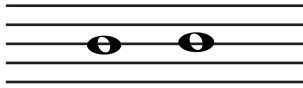
The bottom part of the stave has more space



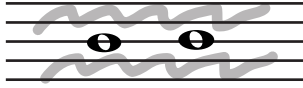
Because of these, the stems will face downwards.
Remember that the stems are drawn on the left side of the note to make the note look like a letter 'p'



Let us look at the notes on the middle line.



Which part of the staff has more space. The top or the bottom?

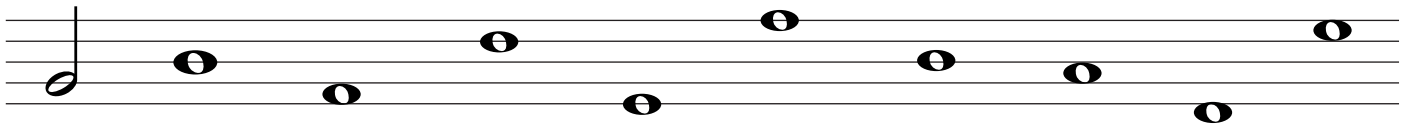


The bottom and the top part of the staff has the same amount of space.



Because of these, the stems can face either upwards or downwards.

Add a stem to every note. (think of the word **Pond**)



Some stems are facing the wrong direction. Correct them so they sit properly on the staff.

